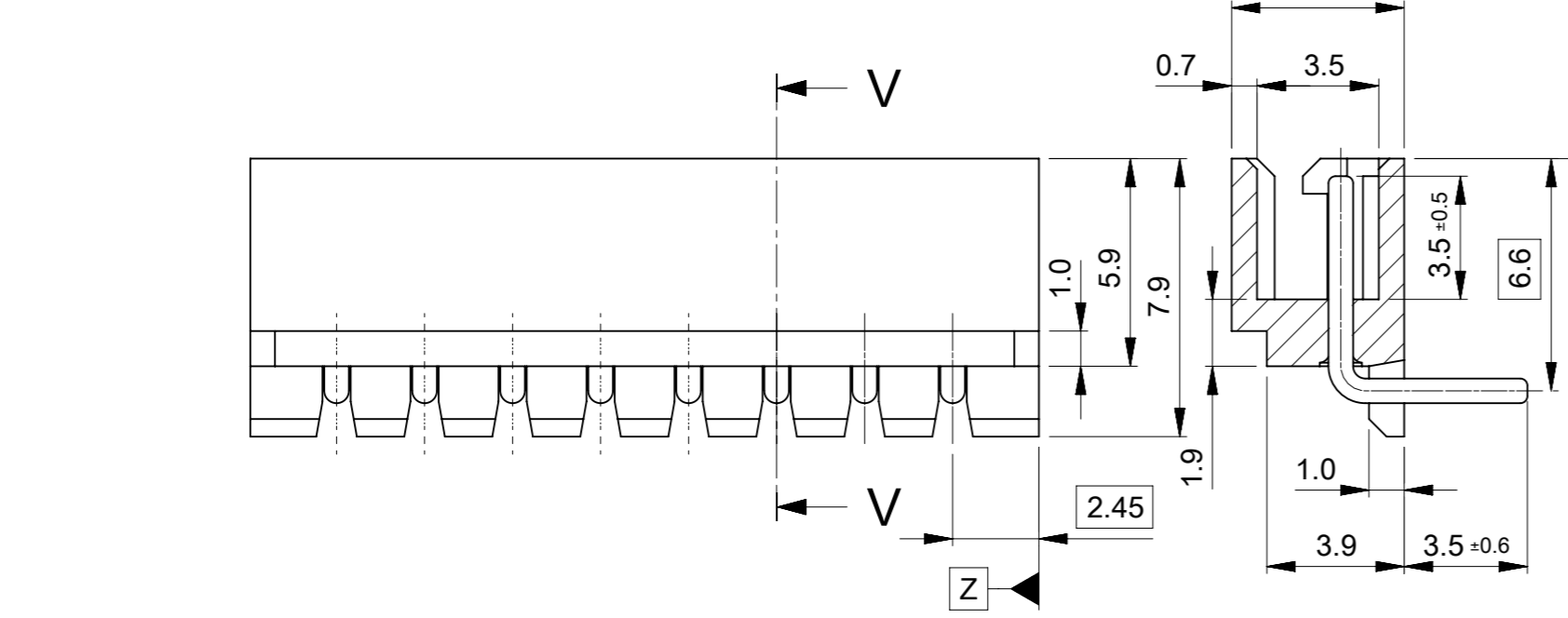


注記 :  
 NOTES:  
 ① 材質 : TABLE 1参照  
 MATERIAL : SEE TABLE 1  
 ② 梱包仕様書、製品仕様書、嵌合相手はSHEET 2をご参照ください。  
 PLEASE REFER TO SHEET 2 FOR PACKAGING SPECIFICATION,  
 PRODUCT SPECIFICATION AND MATE WITH.  
 ③ 発注番号 : ORDER NO.  
 22057\*\*5

極数  
CIRCUIT SIZE

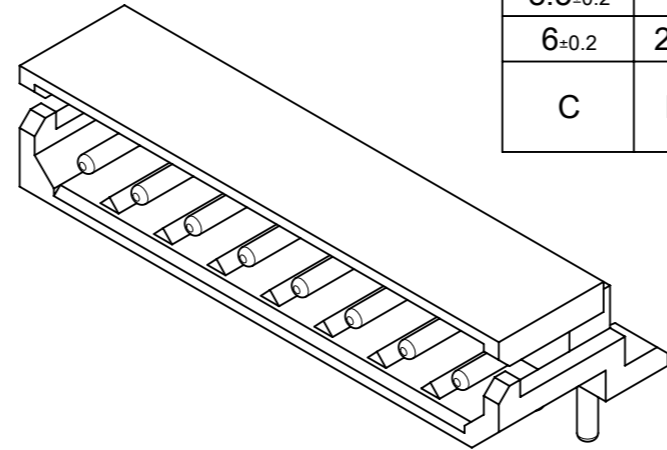


SECTION V-V

38.5±0.3	35	39.9±0.3	ポリ袋 POLY BAG	5268NA	526815A	22057155	15
36±0.3	32.5	37.4±0.3			526814A	22057145	14
33.5±0.3	30	34.9±0.3			526813A	22057135	13
31±0.3	27.5	32.4±0.3			526812A	22057125	12
28.5±0.25	25	29.9±0.25			526811A	22057115	11
26±0.25	22.5	27.4±0.25			526810A	22057105	10
23.5±0.25	20	24.9±0.25			526809A	22057095	9
21±0.25	17.5	22.4±0.25			526808A	22057085	8
18.5±0.25	15	19.9±0.25			526807A	22057075	7
16±0.25	12.5	17.4±0.25			526806A	22057065	6
13.5±0.25	10	14.9±0.25			526805A	22057055	5
11±0.25	7.5	12.4±0.25			526804A	22057045	4
8.5±0.2	5	9.9±0.2			526803A	22057035	3
6±0.2	2.5	7.4±0.2	526802A	22057025	2		
C	B	A	梱包形態 PACKAGING	シリーズ番号 SERIES NO.	ENG. NO.	③ 発注番号 ORDER NO.	極数 CIRCUIT SIZE

① TABLE 1

番号 NO.	部品 PART	材質 MATERIAL	
①	ハウジング HOUSING	ポリアミド(PA), UL94V-0, 色: ナチュラル(白) POLYAMIDE(PA), UL94V-0, COLOR: NATURAL (WHITE)	
②	ピン PIN	母材 BASE METAL	黄銅(Φ0.7) BRASS (Φ0.7)
		めっき PLATING	錫めっき : 3 MICROMETER MIN. TIN
		下地めっき UNDERPLATING	銅めっき : 1 MICROMETER MIN. COPPER (UNDERPLATING)

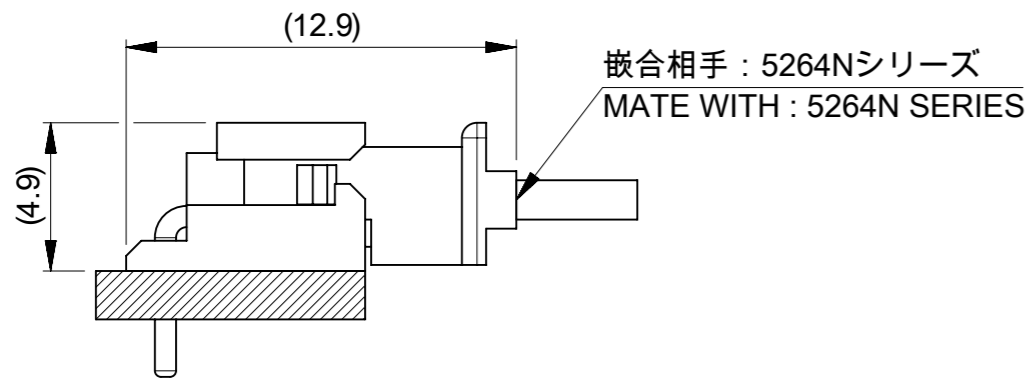
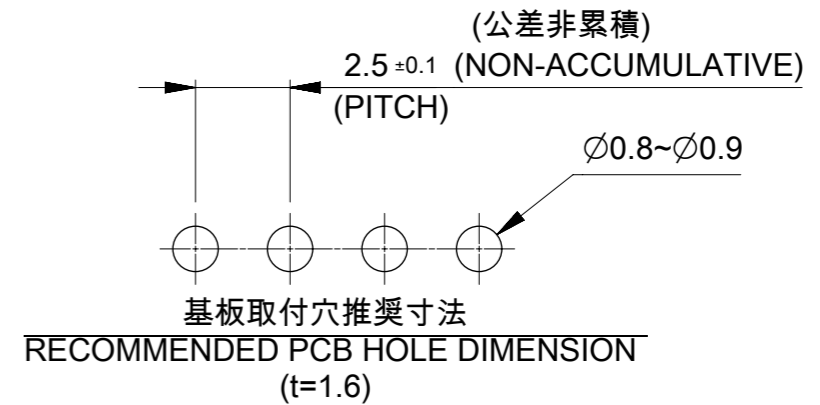
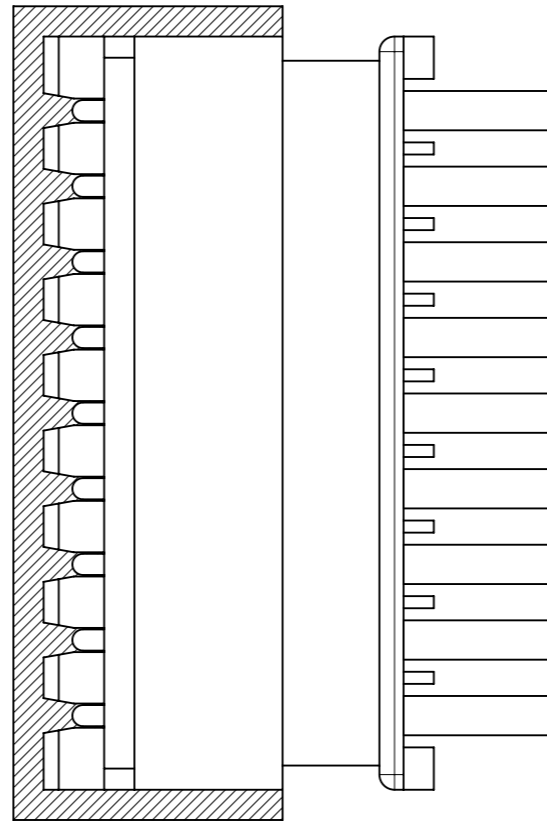
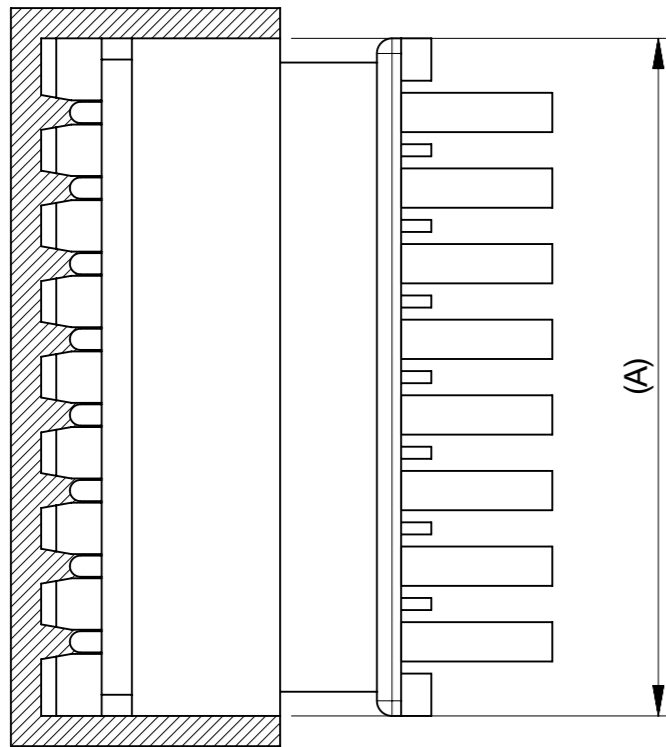


THIS DRAWING CONTAINS INFORMATION THAT IS PROPRIETARY TO MOLEX ELECTRONIC TECHNOLOGIES, LLC AND SHOULD NOT BE USED WITHOUT WRITTEN PERMISSION

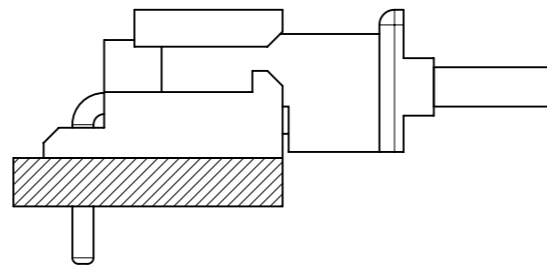
DIMENSION UNITS mm	SCALE NTS	CURRENT REV DESC:		
GENERAL TOLERANCES (UNLESS SPECIFIED)		<b>molex</b> MINI-SPOX 2.5 W/B RIGHT ANGLE PLUG ASSEMBLY WITHOUT COIN COPPER UNDERPLATING PRODUCT CUSTOMER DRAWING		
ANGULAR TOL ± 3.0°				
4 PLACES ±	EC NO: 727270			
3 PLACES ±	DRWN: SOKUMURA01 2022/11/30			
2 PLACES ± 0.2	CHK'D: SAKIYAMA 2023/03/09			
1 PLACE ± 0.2	APPR: AIDA 2023/03/09	INITIAL REVISION:		
0 PLACES ±	DRWN: ABABU01 2019/06/21	2020/05/13		
DRAFT WHERE APPLICABLE MUST REMAIN WITHIN DIMENSIONS		THIRD ANGLE PROJECTION	DRAWING A3-SIZE	SERIES 5268
		MATERIAL NUMBER SEE CHART	CUSTOMER GENERAL	SHEET NUMBER 1 OF 2

△ 適用製品及び各種仕様書  
 APPLICABLE PRODUCTS AND VARIOUS SPECIFICATIONS

梱包仕様書 PACKAGING SPECIFICATION	ORDER NO.	SPECIFICATION NO.
	22057**5	SPK-5268-001 PS 001
嵌合相手 MATE WITH	RECEPTACLE HOUSING	
シリーズ番号 SERIES NO.	5264N	
製品仕様書 PRODUCT SPECIFICATION	PS-5264-001 PS 001	



2-8極  
 2-8 CIRCUIT



9-15極  
 9-15 CIRCUIT

嵌合図  
 MATING CONNECTORS

THIS DRAWING CONTAINS INFORMATION THAT IS PROPRIETARY TO MOLEX ELECTRONIC TECHNOLOGIES, LLC AND SHOULD NOT BE USED WITHOUT WRITTEN PERMISSION									
DIMENSION UNITS		SCALE		CURRENT REV DESC.				<b>molex</b>	
mm		NTS							
GENERAL TOLERANCES (UNLESS SPECIFIED)				EC NO: 727270				MINI-SPOX 2.5 W/B	
ANGULAR TOL ± 3.0 °				DRWN: SOKUMURA01 2022/11/30				RIGHT ANGLE PLUG ASSEMBLY WITHOUT COIN	
4 PLACES ±				CHK'D: SAKIYAMA 2023/03/09				COPPER UNDERPLATING	
3 PLACES ±				APPR: AIDA 2023/03/09				PRODUCT CUSTOMER DRAWING	
2 PLACES ± 0.2				INITIAL REVISION:				DOCUMENT NUMBER	
1 PLACE ± 0.2				DRWN: ABABU01 2019/06/21				52680001-SD	
0 PLACES ±				APPR: KOMURAKAMI 2020/05/13				DOC TYPE DOC PART REVISION	
DRAFT WHERE APPLICABLE MUST REMAIN WITHIN DIMENSIONS				THIRD ANGLE PROJECTION		DRAWING		SHEET NUMBER	
				A3-SIZE		SERIES		CUSTOMER	
						5268		GENERAL	
				SEE SHEET 1		GENERAL		2 OF 2	