

# 9mm Metal Shaft Rotary Potentiometer – With Switch (9mm – 帶開關)

**RK0972S**



## Part Number

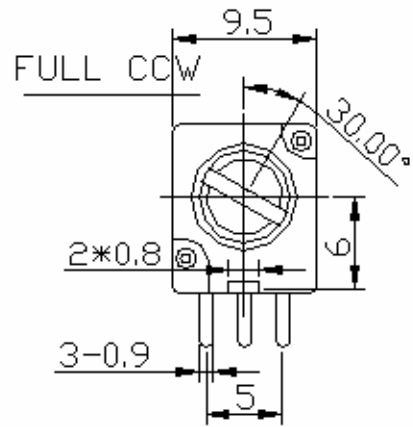
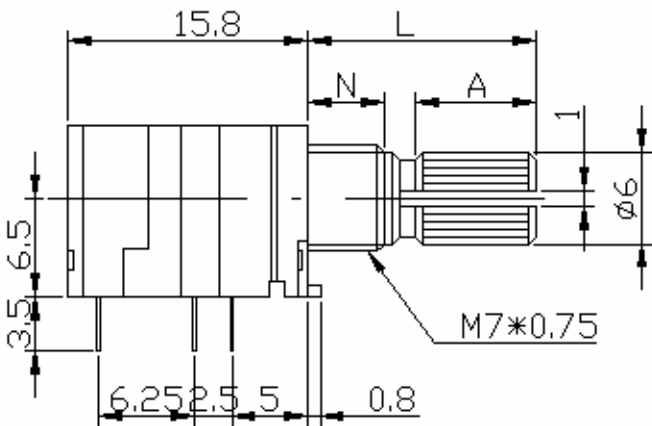
**RK0972 S- B 50K, L - 20 KC**

Taper  
 ↓  
 線性  
 With Switch  
 ↓  
 帶開關

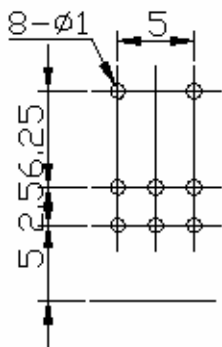
Resistance Value  
 ↓  
 阻值

Shaft Type  
 ↓  
 軸型  
 Shaft Length  
 ↓  
 軸長

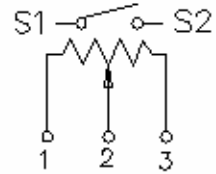
## Dimensions 規格尺寸



### P.C.B LAYOUT



### CIRCUIT



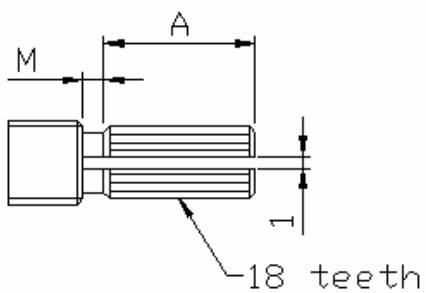
# 9mm Metal Shaft Rotary Potentiometer (9mm )

## Shaft Type 軸型

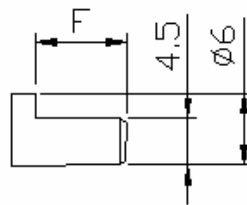
Bushing Length

N	5	7
---	---	---

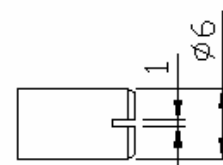
### KC TYPE



### F TYPE



### RE TYPE



### KC TYPE

N=5mm

L	12	15	20	25
A	3.5	7.5	12	12
M	0.5	1	2	2

### F TYPE

N=5mm

L	15	20	25
F	7	12	12

### RE TYPE

N=5mm

L	15	20	25
---	----	----	----

# 9mm Metal Shaft Rotary Potentiometer – With Switch (9mm – 帶開關)

## Electrical Characteristics 電氣特性

Total Resistance 總阻值	1K ~ 500KΩ				
Total Resistance Tolerance 總阻值誤差	20 (more than 1KΩ 30 )				
Resistance Tape 線性	A. B. C. D. W. Taper				
Resistance Taper Characteristics 阻值變化特性範圍	A50%	B50%	C50%	D50%	W50%
	15-25%	40-60%	75-85%	2-15%	45-55%
Rated Power 定格電	B Taper 0.05 W , Other Tapers 0.02 W				
Residual Resistance 殘	R 250KΩ 0.1% 250KΩ R 10KΩ 20Ω Max. 10KΩ R 20Ω Max.				
Noise 雜音	Less than 100 mV				
Insulation Resistance 絕緣阻抗	DC 250V 100MΩ				
Withstand Voltage 耐電壓	1 minute at AC 300V				
Switch Rating 開關額定值	DC 16V 1A				
Switch Contact Resistance 開關接觸電阻	≤ 50m Ω				
Rotational Life 迴轉壽命	15,000 Cycles				

## Mechanical Characteristics 機械特性

Total Rotational Angle 全迴轉角	300±5°				
Operating Force 全迴轉	20 ~ 250gf.cm				
Stopper Strength 全迴轉止強	5 kgf.cm max.				
Switch Working Force 開關作動	≤ 400 gf.cm				
Switch Working Angle 開關迴轉角	≤ 50°				
Shaft Push-Pull Strength 軸心壓入	10 kgf.cm Max.				
Shaft Lever Wobble 軸心搖動接受	0.6 x L/ 20 mm p-p max. (L: lever length both side)				
Soldering Heat 焊錫耐熱性	300°C, 3s. (Only for Hand-Soldering)				