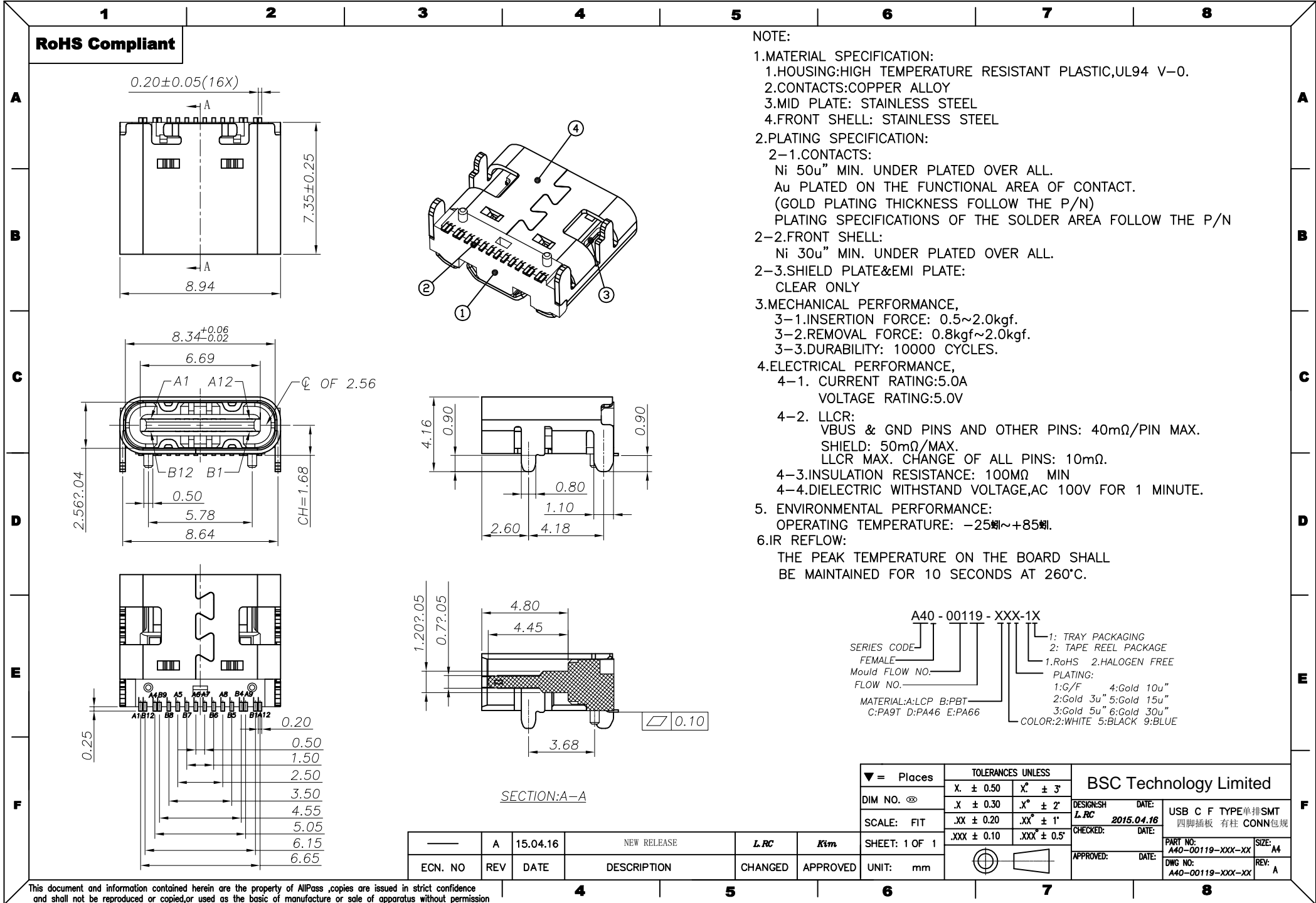


RoHS Compliant

NOTE:

- 1.MATERIAL SPECIFICATION:
 - 1.HOUSING:HIGH TEMPERATURE RESISTANT PLASTIC,UL94 V-0.
 - 2.CONTACTS:COPPER ALLOY
 - 3.MID PLATE: STAINLESS STEEL
 - 4.FRONT SHELL: STAINLESS STEEL
- 2.PLATING SPECIFICATION:
 - 2-1.CONTACTS:
 - Ni 50u" MIN. UNDER PLATED OVER ALL.
 - Au PLATED ON THE FUNCTIONAL AREA OF CONTACT.
 - (GOLD PLATING THICKNESS FOLLOW THE P/N)
 - PLATING SPECIFICATIONS OF THE SOLDER AREA FOLLOW THE P/N
 - 2-2.FRONT SHELL:
 - Ni 30u" MIN. UNDER PLATED OVER ALL.
 - 2-3.SHIELD PLATE&EMI PLATE:
 - CLEAR ONLY
- 3.MECHANICAL PERFORMANCE,
 - 3-1.INSERTION FORCE: 0.5~2.0kgf.
 - 3-2.REMOVAL FORCE: 0.8kgf~2.0kgf.
 - 3-3.DURABILITY: 10000 CYCLES.
- 4.ELECTRICAL PERFORMANCE,
 - 4-1. CURRENT RATING:5.0A
VOLTAGE RATING:5.0V
 - 4-2. LLCR:
 - VBUS & GND PINS AND OTHER PINS: 40mΩ/PIN MAX.
 - SHIELD: 50mΩ/MAX.
 - LLCR MAX. CHANGE OF ALL PINS: 10mΩ.
 - 4-3.INSULATION RESISTANCE: 100MΩ MIN
 - 4-4.DIELECTRIC WITHSTAND VOLTAGE,AC 100V FOR 1 MINUTE.
5. ENVIRONMENTAL PERFORMANCE:
 - OPERATING TEMPERATURE: -25~+85
- 6.IR REFLOW:
 - THE PEAK TEMPERATURE ON THE BOARD SHALL BE MAINTAINED FOR 10 SECONDS AT 260°C.



A40 - 00119 - XXX - 1X

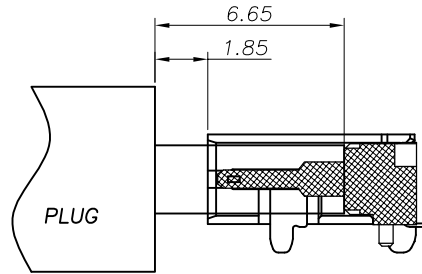
SERIES CODE: 1: TRAY PACKAGING
 FEMALE: 2: TAPE REEL PACKAGE
 Mould FLOW NO.: 1:RoHS 2:HALOGEN FREE
 FLOW NO.: PLATING:
 1:G/F 4:Gold 10u"
 2:Gold 3u" 5:Gold 15u"
 3:Gold 5u" 6:Gold 30u"
 MATERIAL:A:LCP B:PBT
 C:PA9T D:PA46 E:PA66
 COLOR:2:WHITE 5:BLACK 9:BLUE

SECTION:A-A

| ▽ = Places | TOLERANCES UNLESS | | BSC Technology Limited | |
|------------|-------------------|--------------------------|------------------------|------------|
| | X. ± 0.50 | X ^c ± 3' | | |
| DIM NO. Ⓢ | .X ± 0.30 | .X ^c ± 2' | DESIGN:SH | DATE: |
| SCALE: FIT | .XX ± 0.20 | .XX ^b ± 1' | L.R.C | 2015.04.18 |
| | .XXX ± 0.10 | .XXX ^a ± 0.5' | CHECKED: | DATE: |
| | | | APPROVED: | DATE: |

| | | | | | | |
|---------|-----|----------|-------------|---------|----------|---------------|
| — | A | 15.04.16 | NEW RELEASE | L.R.C | Ktm | SHEET: 1 OF 1 |
| ECN. NO | REV | DATE | DESCRIPTION | CHANGED | APPROVED | UNIT: mm |

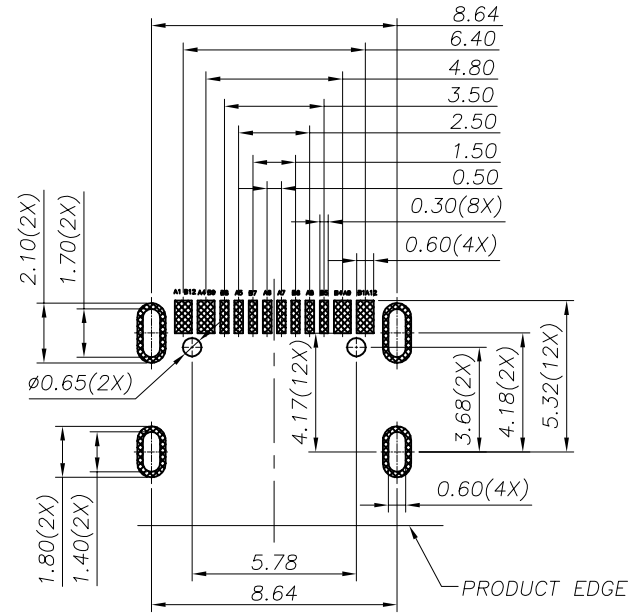
RoHS Compliant



AFTER MATING

USB TYPE-C PIN ASSIGNMENTS

| PIN NUMBER | SIGNAL NAME | PIN NUMBER | SIGNAL NAME |
|------------|-------------|------------|-------------|
| A1 | GND | B12 | GND |
| A4 | VBUS | B9 | VBUS |
| A5 | CC1 | B8 | SBU2 |
| A6 | Dp1 | B7 | Dn2 |
| A7 | Dn1 | B6 | Dp2 |
| A8 | SBU1 | B5 | CC2 |
| A9 | VBUS | B4 | VBUS |
| A12 | GND | B1 | GND |



RECOMMENDED PCB LAYOUT(TOP VIEW)
THICKNESS 0.80MM;DEFAULT TOLERANCE:±0.05

| | | | |
|---------------|-------------------|--------------|------------------------------------|
| ▼ = Places | TOLERANCES UNLESS | | BSC Technology Limited |
| | X ± 0.50 | X° ± 3' | |
| DIM NO. Ⓢ | .X ± 0.30 | .X° ± 2' | DESIGN:SH DATE: |
| SCALE: FIT | .XX ± 0.20 | .XX° ± 1' | L.R.C 2015.04.16 |
| SHEET: 1 OF 1 | .XXX ± 0.10 | .XXX° ± 0.5' | CHECKED: DATE: |
| UNIT: mm | | | APPROVED: DATE: |
| | | | PART NO: A40-00119-XXX-XX SIZE: A4 |
| | | | DWG NO: A40-00119-XXX-XX REV: A |

| | | | | | |
|---------|-----|----------|-------------|---------|----------|
| — | A | 15.04.16 | NEW RELEASE | L.R.C | Kim |
| ECN. NO | REV | DATE | DESCRIPTION | CHANGED | APPROVED |